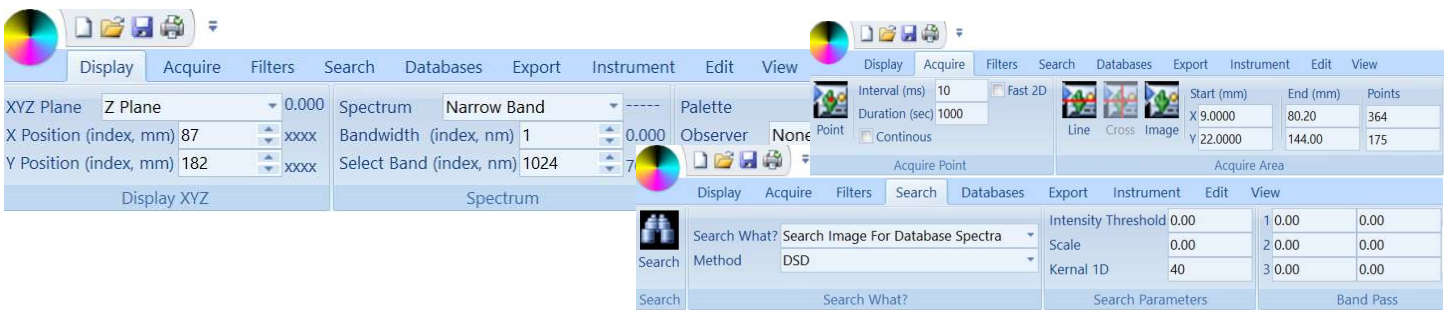
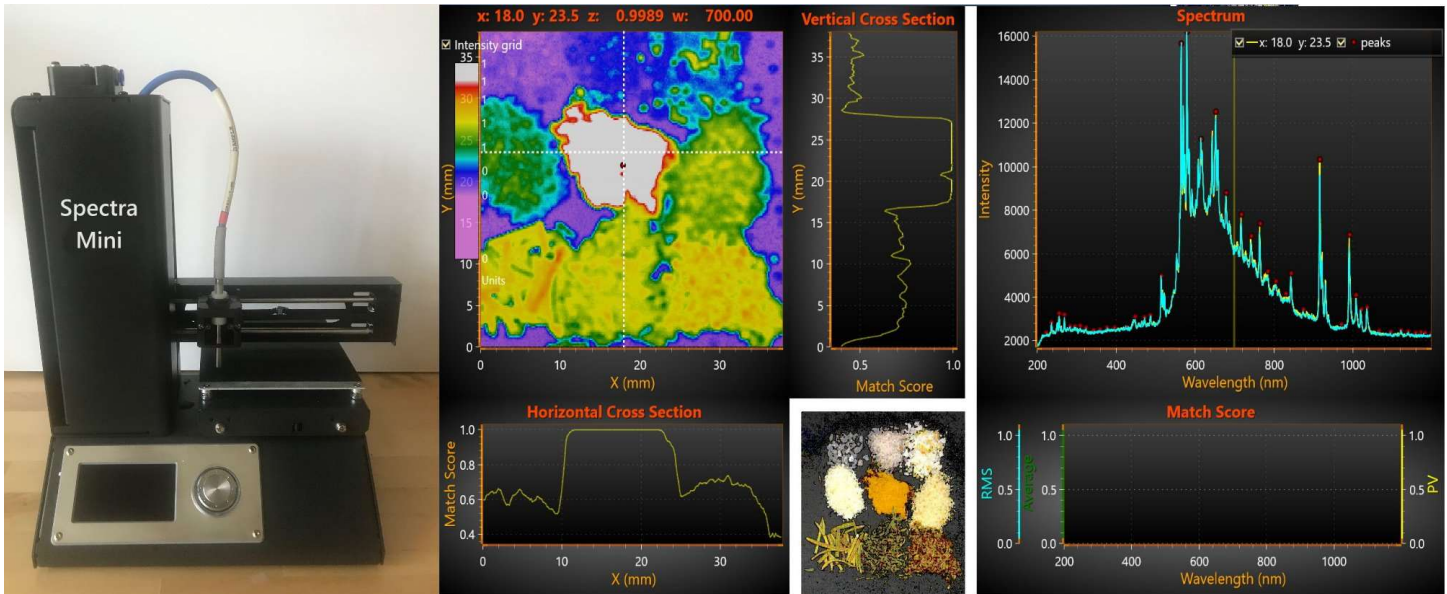


SPECTRA MINI

HYPER SPECTRAL SPECTROMETER



Spectra Mini

- X, Y, Z Automated axes
- Scan Area ⁽¹⁾: 100 x 100 mm
- Scan Resolution ⁽¹⁾: 0.1 mm
- Spectral Range. ⁽²⁾ 240 – 1700 nm
- Spectral Resolution ⁽²⁾: 0.5 nm

1. Scanner dependent. Contact us for larger.
2. Spectrometer dependent. Contact us for options.

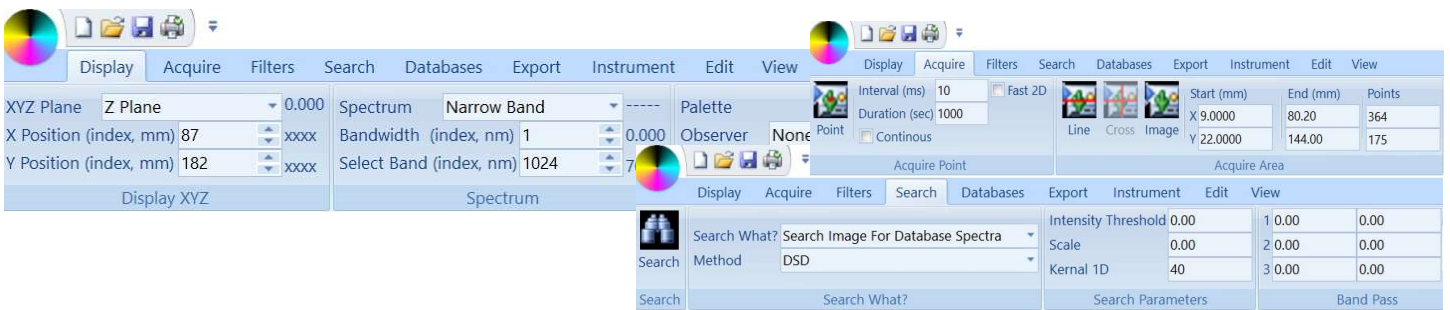
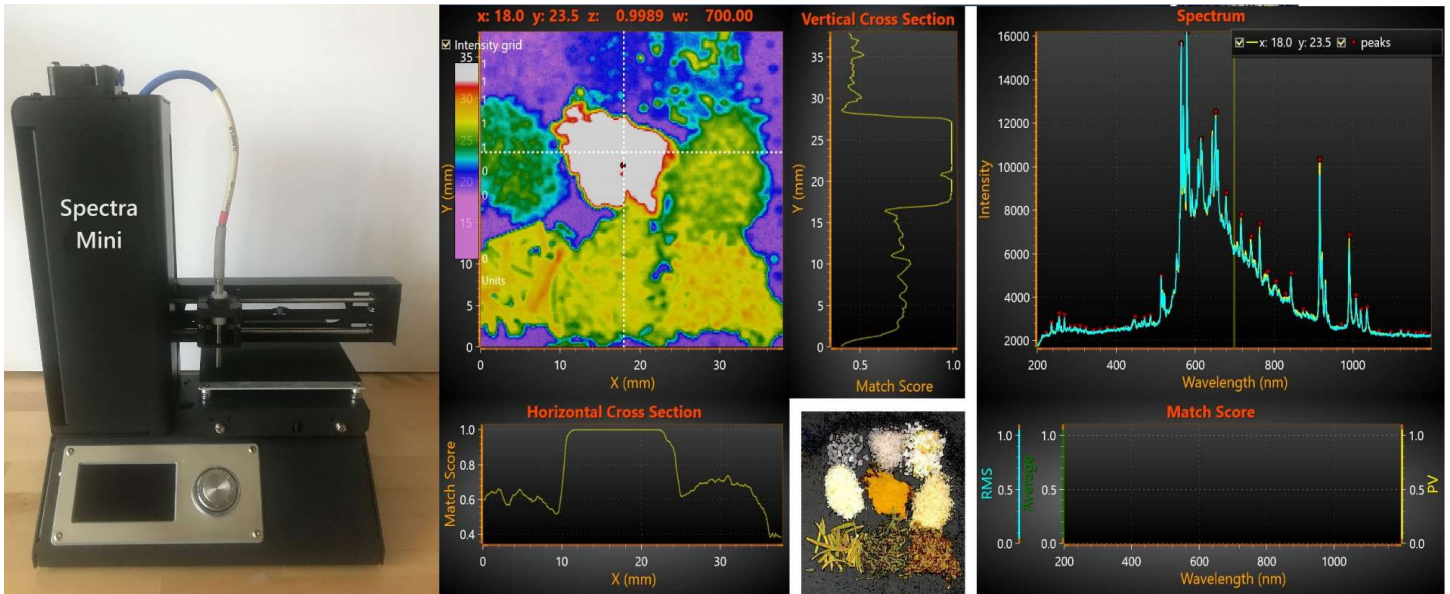
Spectra Insight Software

- View 1000's of wavelengths at megapixel resolution.
- View 3D Cube in xy, xz, yz planes in real-time
- Color palettes for UV, visible, and NIR wavelengths.
- Search anomalies and/or spectral database matches.
- Analyze images, regions, or individual pixels.
- Display volumetric, 3D Surface, 2D Image, 1D cross-sections, and single pixel spectral data.
- Normalization using industry standards or desired spectral data.
- Import 3rd party spectral data for analysis.
- Multiple 3rd party database searches
- Simple yet powerful Ribbon Interface
- Compatible with virtually any spectrometer



SPECTRA MINI

HYPER SPECTRAL SPECTROMETER



Spectra Mini

- X, Y, Z Automated axes
- Scan Area ⁽¹⁾: 100 x 100 mm
- Scan Resolution ⁽¹⁾: 0.1 mm
- Spectral Range. ⁽²⁾ 240 – 1700 nm
- Spectral Resolution ⁽²⁾: 0.5 nm

1. Scanner dependent. Contact us for larger.
2. Spectrometer dependent. Contact us for options.

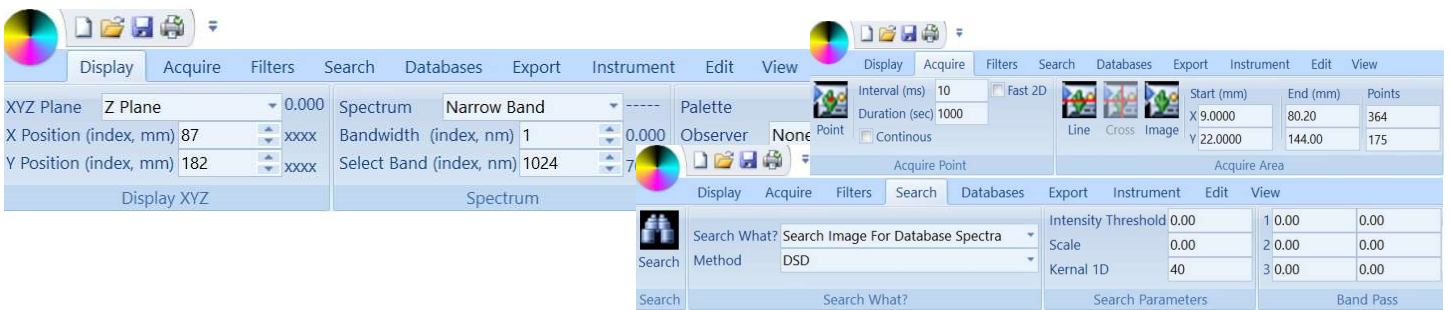
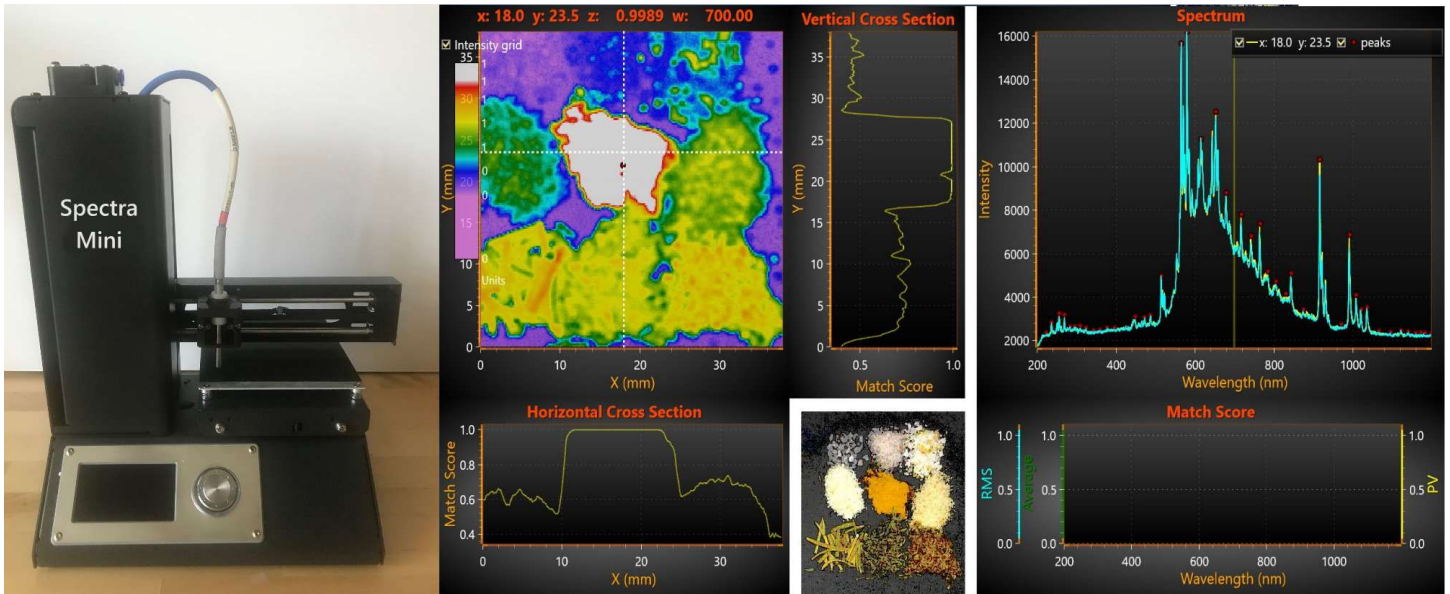
Spectra Insight Software

- View 1000's of wavelengths at megapixel resolution.
- View 3D Cube in xy, xz, yz planes in real-time
- Color palettes for UV, visible, and NIR wavelengths.
- Search anomalies and/or spectral database matches.
- Analyze images, regions, or individual pixels.
- Display volumetric, 3D Surface, 2D Image, 1D cross-sections, and single pixel spectral data.
- Normalization using industry standards or desired spectral data.
- Import 3rd party spectral data for analysis.
- Multiple 3rd party database searches
- Simple yet powerful Ribbon Interface
- Compatible with virtually any spectrometer



SPECTRA MINI

HYPER SPECTRAL SPECTROMETER



Spectra Mini

- X, Y, Z Automated axes
- Scan Area ⁽¹⁾: 100 x 100 mm
- Scan Resolution ⁽¹⁾: 0.1 mm
- Spectral Range. ⁽²⁾ 240 – 1700 nm
- Spectral Resolution ⁽²⁾: 0.5 nm

1. Scanner dependent. Contact us for larger.
2. Spectrometer dependent. Contact us for options.

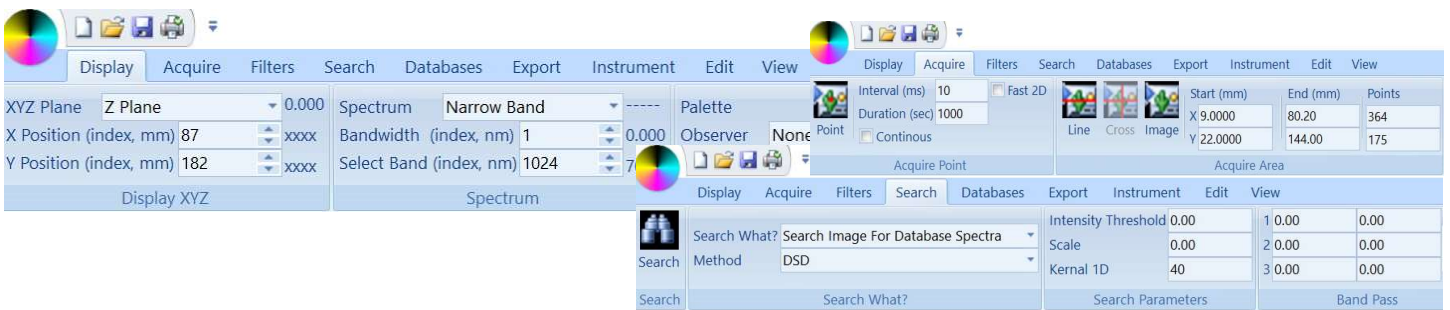
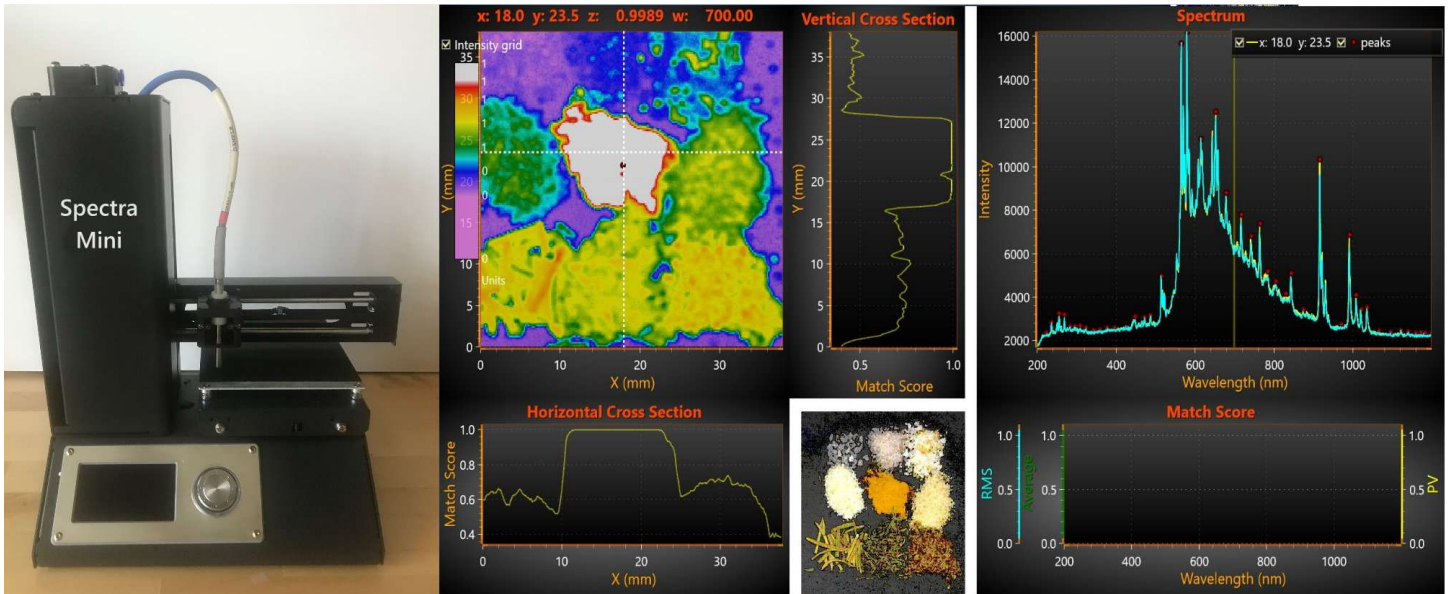
Spectra Insight Software

- View 1000's of wavelengths at megapixel resolution.
- View 3D Cube in xy, xz, yz planes in real-time
- Color palettes for UV, visible, and NIR wavelengths.
- Search anomalies and/or spectral database matches.
- Analyze images, regions, or individual pixels.
- Display volumetric, 3D Surface, 2D Image, 1D cross-sections, and single pixel spectral data.
- Normalization using industry standards or desired spectral data.
- Import 3rd party spectral data for analysis.
- Multiple 3rd party database searches
- Simple yet powerful Ribbon Interface
- Compatible with virtually any spectrometer



SPECTRA MINI

HYPER SPECTRAL SPECTROMETER



Spectra Mini

- X, Y, Z Automated axes
- Scan Area ⁽¹⁾: 100 x 100 mm
- Scan Resolution ⁽¹⁾: 0.1 mm
- Spectral Range. ⁽²⁾ 240 – 1700 nm
- Spectral Resolution ⁽²⁾: 0.5 nm

1. Scanner dependent. Contact us for larger.
2. Spectrometer dependent. Contact us for options.

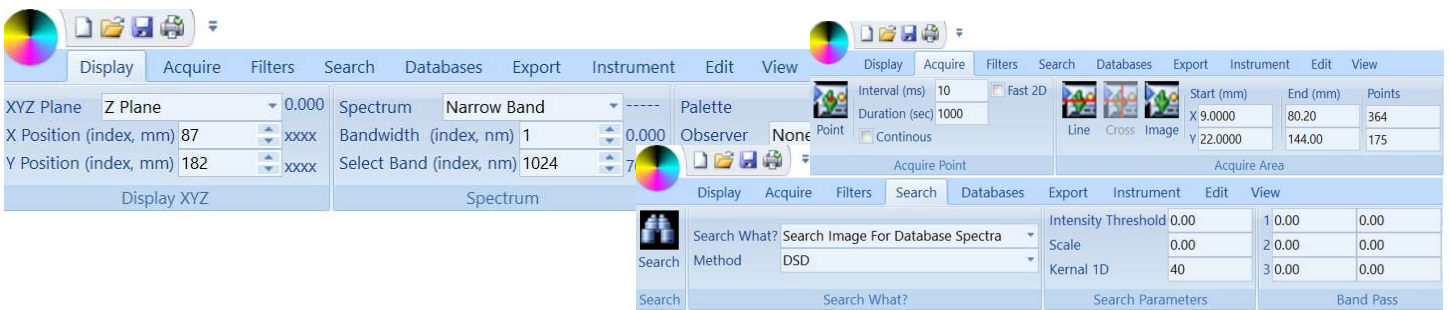
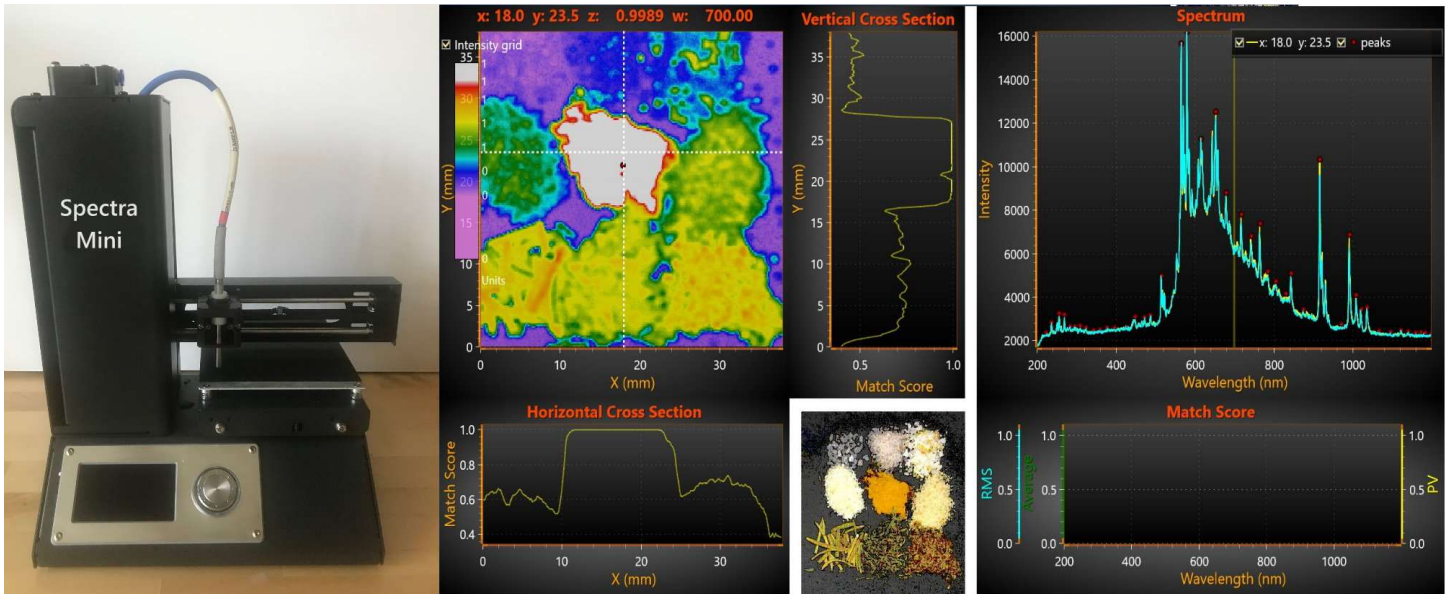
Spectra Insight Software

- View 1000's of wavelengths at megapixel resolution.
- View 3D Cube in xy, xz, yz planes in real-time
- Color palettes for UV, visible, and NIR wavelengths.
- Search anomalies and/or spectral database matches.
- Analyze images, regions, or individual pixels.
- Display volumetric, 3D Surface, 2D Image, 1D cross-sections, and single pixel spectral data.
- Normalization using industry standards or desired spectral data.
- Import 3rd party spectral data for analysis.
- Multiple 3rd party database searches
- Simple yet powerful Ribbon Interface
- Compatible with virtually any spectrometer



SPECTRA MINI

HYPER SPECTRAL SPECTROMETER



Spectra Mini

- X, Y, Z Automated axes
- Scan Area ⁽¹⁾: 100 x 100 mm
- Scan Resolution ⁽¹⁾: 0.1 mm
- Spectral Range. ⁽²⁾ 240 – 1700 nm
- Spectral Resolution ⁽²⁾: 0.5 nm

1. Scanner dependent. Contact us for larger.
2. Spectrometer dependent. Contact us for options.

Spectra Insight Software

- View 1000's of wavelengths at megapixel resolution.
- View 3D Cube in xy, xz, yz planes in real-time
- Color palettes for UV, visible, and NIR wavelengths.
- Search anomalies and/or spectral database matches.
- Analyze images, regions, or individual pixels.
- Display volumetric, 3D Surface, 2D Image, 1D cross-sections, and single pixel spectral data.
- Normalization using industry standards or desired spectral data.
- Import 3rd party spectral data for analysis.
- Multiple 3rd party database searches
- Simple yet powerful Ribbon Interface
- Compatible with virtually any spectrometer

